



Mouse anti TCR α /b Monoclonal Antibody

Alternative Name(s): TCR alpha

Order Information

- **Description:** TCR α /b (Human)
- **Catalogue:** 605-100
- **Lot:** See label
- **Size:** 100 μ g/200 μ l
- **Host:** Mouse
- **Clone:** IP26
- **Application:** IHC(P), FC
- **Reactivity:** Hu

ANTIGEN PREPARATION

A recombinant protein of human TCR α /b

BACKGROUND

The antigen-specific T cell receptor (TCR) is composed of either alpha and beta subunit, or gamma and delta subunit. Majority of T cells present in the blood, lymph and secondary lymphoid organs express TCR alpha/beta heterodimers, whereas the T cells expressing TCR gamma/delta heterodimers are localized mainly in epithelial tissues and at the sites of infection. The subunits of TCR heterodimers are covalently bonded and in the endoplasmic reticulum they associate with CD3 subunits to form functional TCR-CD3 complex. Lack of expression of any of the chains is sufficient to stop cell surface expression. The IP26 antibody reacts with a monomorphic determinant of the α/β T-cell receptor, which is expressed on greater than 95% of normal peripheral blood CD3⁺ T cells. The α/β TCR recognizes a peptide bound to MHC leading to T-cell activation.

PURIFICATION

The mouse IgG is purified by Protein A-Affinity Chromatography according to Isotyping

FORMULATION

This affinity purified antibody is supplied in sterile Phosphatebuffered saline (pH7.2) containing antibody stabilizer

SPECIFICITY

This antibody recognizes human TCR α /b protein. The other species are not tested.

STORAGE

The antibodies are stable for 24 months from date of receipt when stored at -20°C to -70°C . The antibodies can be stored at 2°C - 8°C for three month without detectable loss of activity. Avoid repeated freezing-thawing cycles.

APPLICATIONS/SUGGESTED WORKING DILUTIONS*

- Western Blot: 0.1-1 μ g/ml
- ELISA: 0.01-0.1 μ g/ml
- Immunoprecipitation: 2-5 μ g/ml
- IHC: 2-10 μ g/ml
- Flow cytometry: 0.5-5 μ g/10⁶ cells
- Molecular Weight: 18.0
- Positive Control: Kidney Tissue
- Cellular Location: Cell Membrane

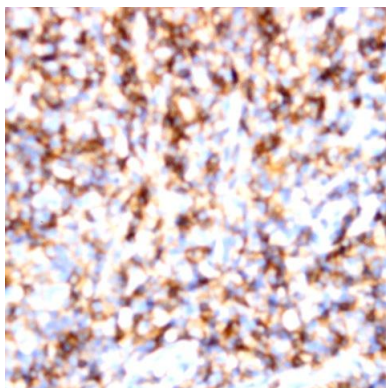
*Optimal dilutions should be determined by researchers for the specific applications.

FOR RESEARCH USE ONLY.

AbboMax, Inc 2528 Qume Drive, Suite 8, San Jose, California 95131, USA
1 408-573-1898 (Tel). 1 408-573-1858 (Fax). www.abbomax.com info@abbomax.com



DATA ATTACHMENTS



Immunohistochemistry: Human Tonsil (FFPE) stained with Mouse anti- TCR-alpha (Cat# 605-100) at 1:200 for 10 min @ RT. Staining of formalin-fixed tissue requires boiling tissue sections in 10 mM Citrate Buffer, pH 6.0 for 10 min followed by cooling at RT for 20 min.

REFERENCES

FOR RESEARCH USE ONLY.

AbboMax, Inc 2528 Qume Drive, Suite 8, San Jose, California 95131, USA
1 408-573-1898 (Tel). 1 408-573-1858 (Fax). www.abbomax.com info@abbomax.com